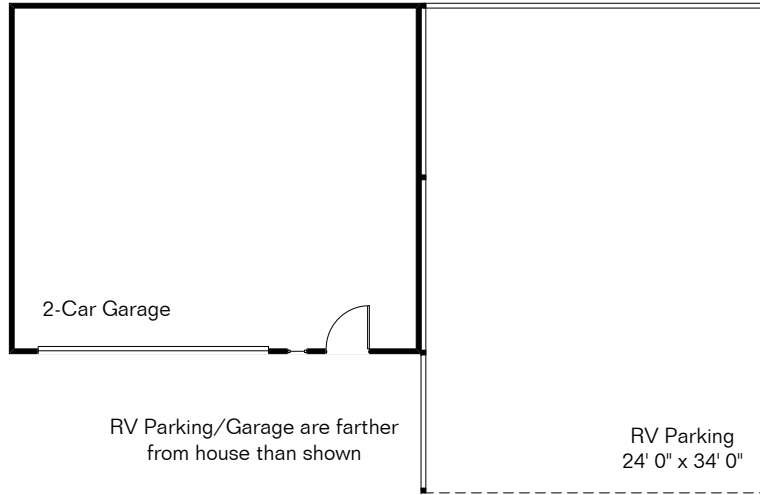


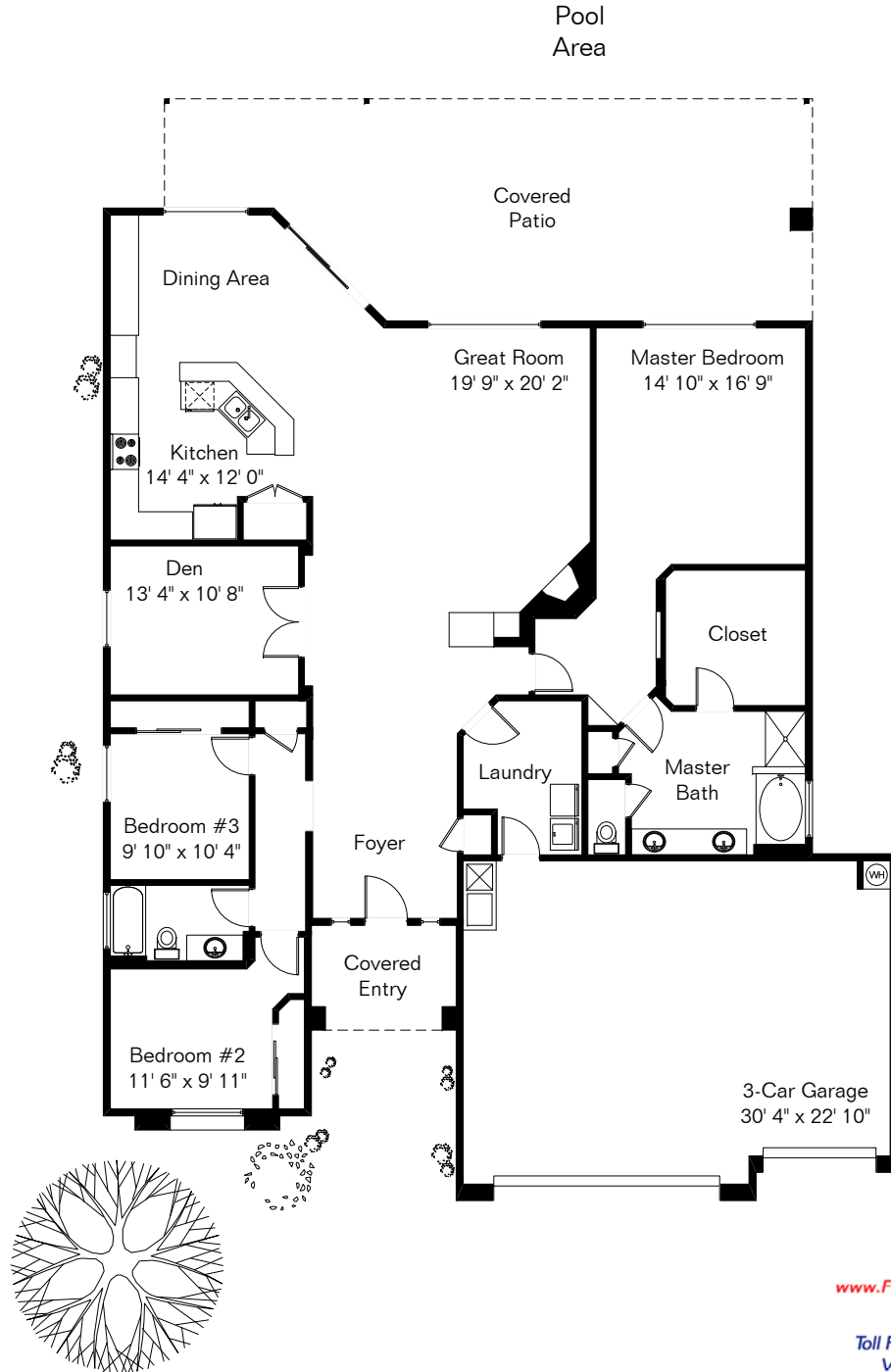
The square footages and room size information are deemed to be reliable but are not guaranteed and should be independently verified.



16491 W Sitka Lane

Presented by Pam Treece
Long Realty Company
(520) 275-2664

Living Area 2,367 Sq Ft
RV Parking/Garage 1,512 Sq Ft
Garage 733 Sq Ft



Site Visit October 2017



Copyright 2017 Floor Plans First! LLC
All Rights Reserved.

www.FloorPlansFirst.com

Toll Free (877) 887-1500
Voice (520) 881-1500
Fax (520) 791-7701

Floor Plans First!
See the Floor Plan First!